

PROGETTO DEFINITIVO-ESECUTIVO

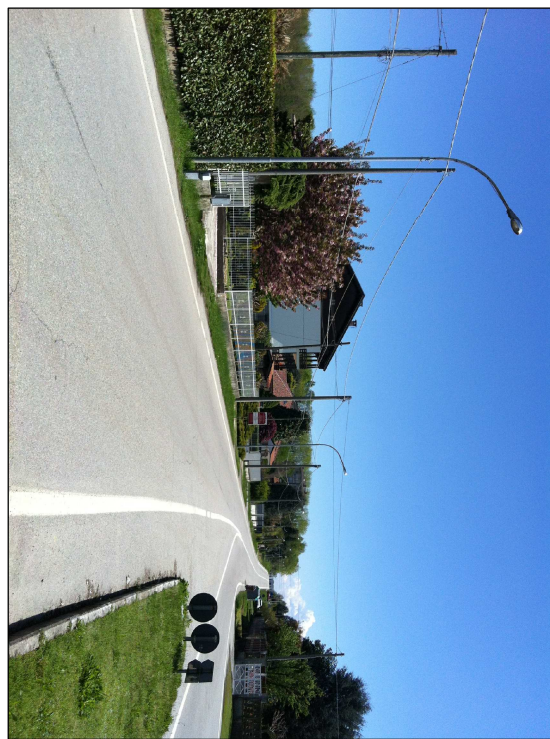
LAVORI DI RIQUALIFICAZIONE ENERGETICA

LINEE DI ILLUMINAZIONE PUBBLICA DI

VIA GIOANNINI E VIA MONTALENGHE

IL PROGETTISTA

COLLABORATORE  
PARTE ELETTRICA



TAV. 2

SCALA:

VARIE

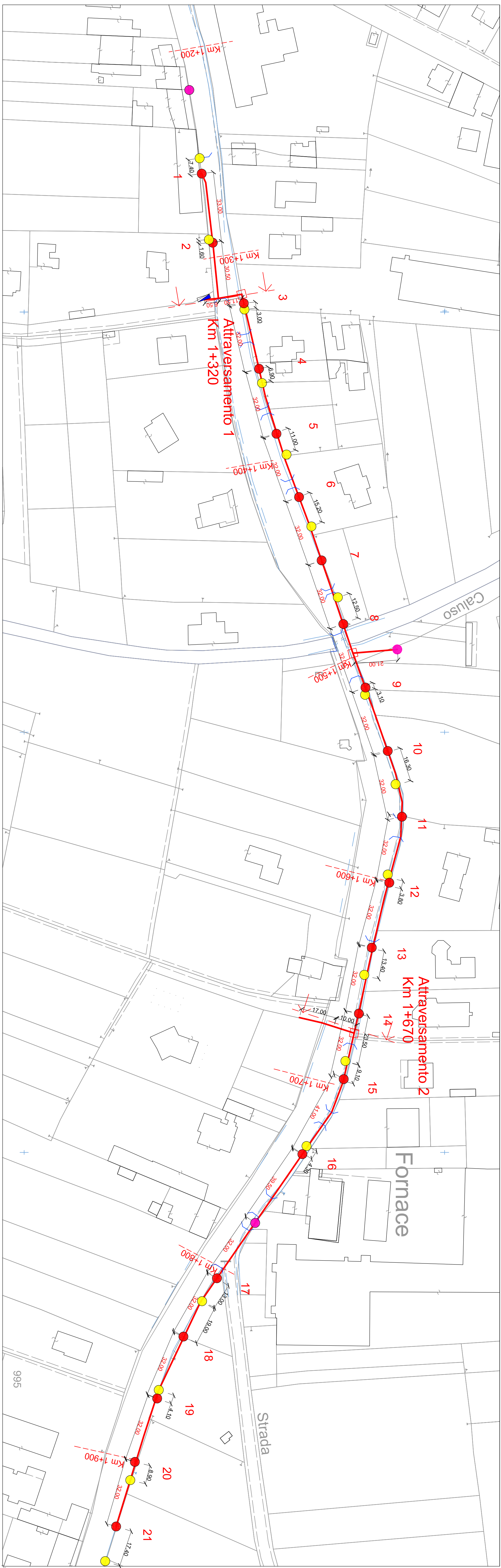
PLANIMETRIA INTERVENTI

SEZIONI ATTRAVERSAMENTI

DATA: LUGLIO 2012

ING. SUCCIO MARCO - N° ISCRIZ. 10864W  
VIA TRIESTE 59 - 10080 BOSCONERO (TO)  
TEL./FAX 0119889208 - CELL. 3470473962  
E-MAIL: MARCO@STUDIO9SUCCIO.COM

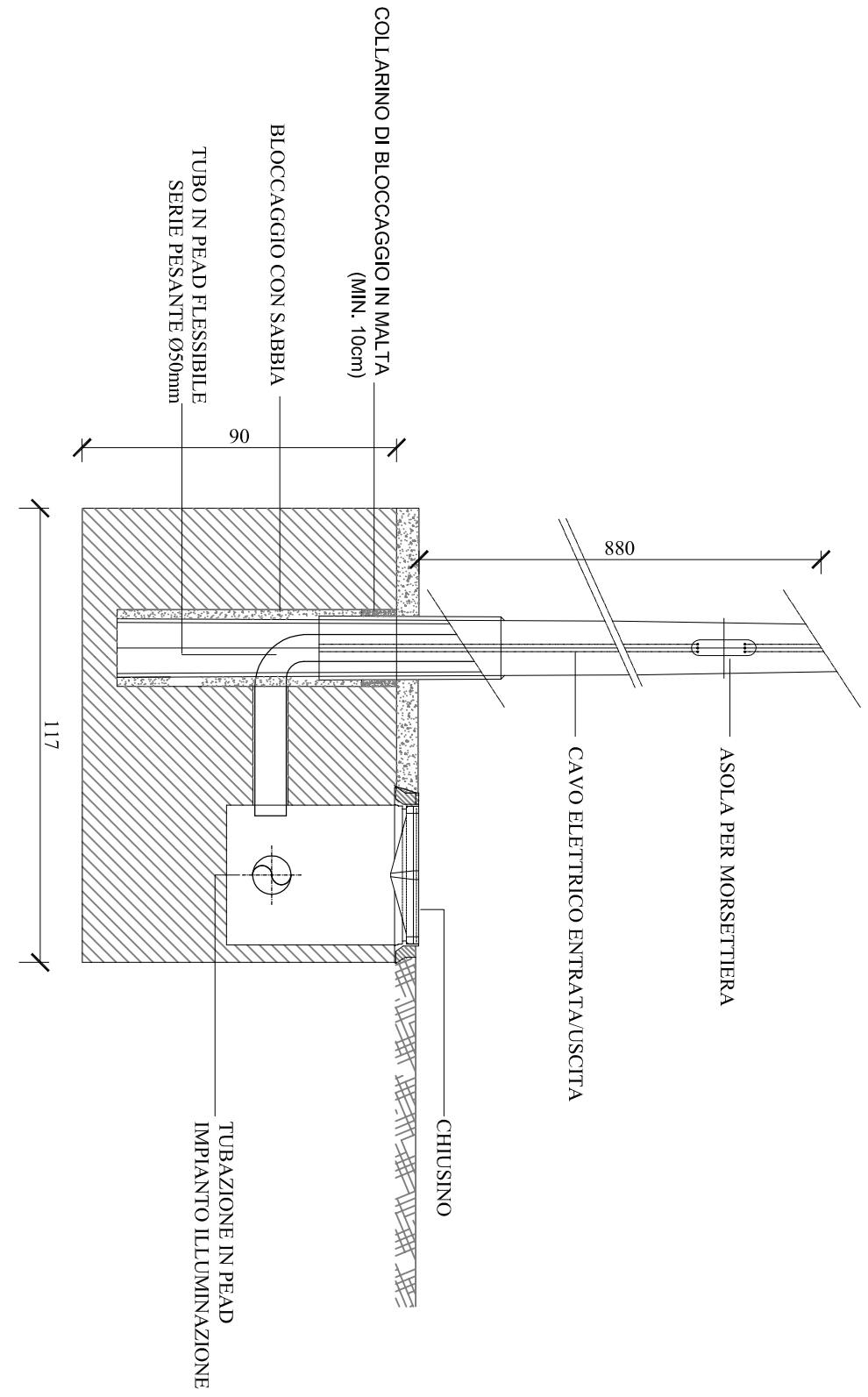
PLANIMETRIA VIA MONTALENGHE - SCALA 1:1.000



- Palo IP da rimuovere
- Palo IP non modificato
- Palo IP in progetto con chiusura
- Percorso cavo elettrico (seavo)
- Pozzetti ispezionabili
- Anzadi di deviazione esistenti

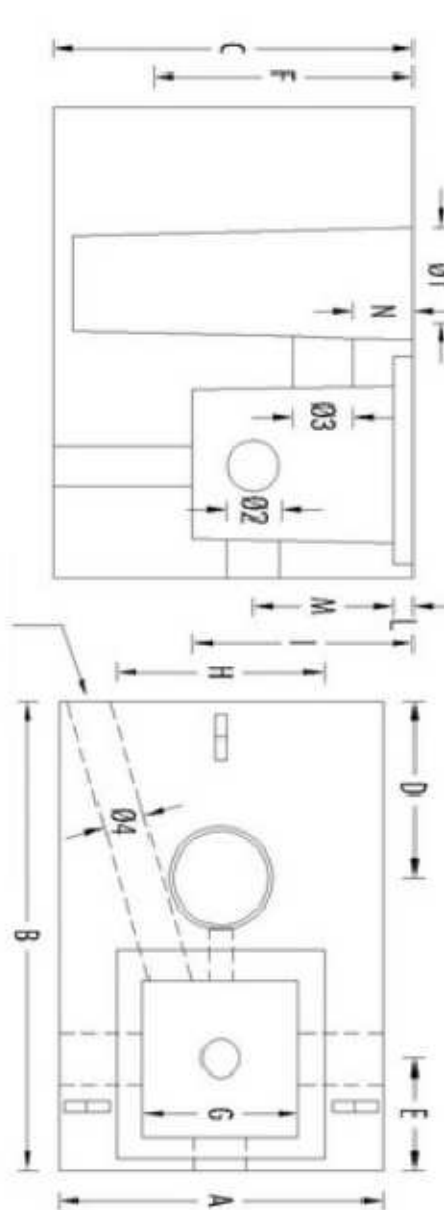
PARTICOLARE BASAMENTO LAMPIONE

SCALA 1:20

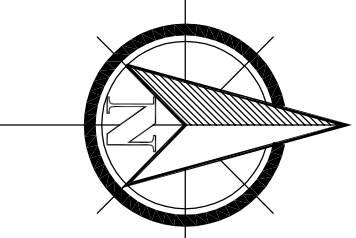


SPECIFICHE BASAMENTO LAMPIONE

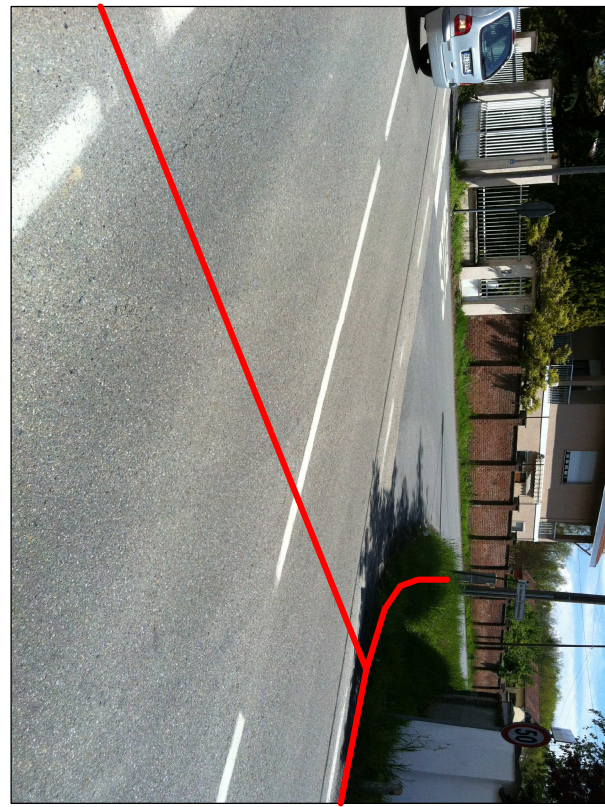
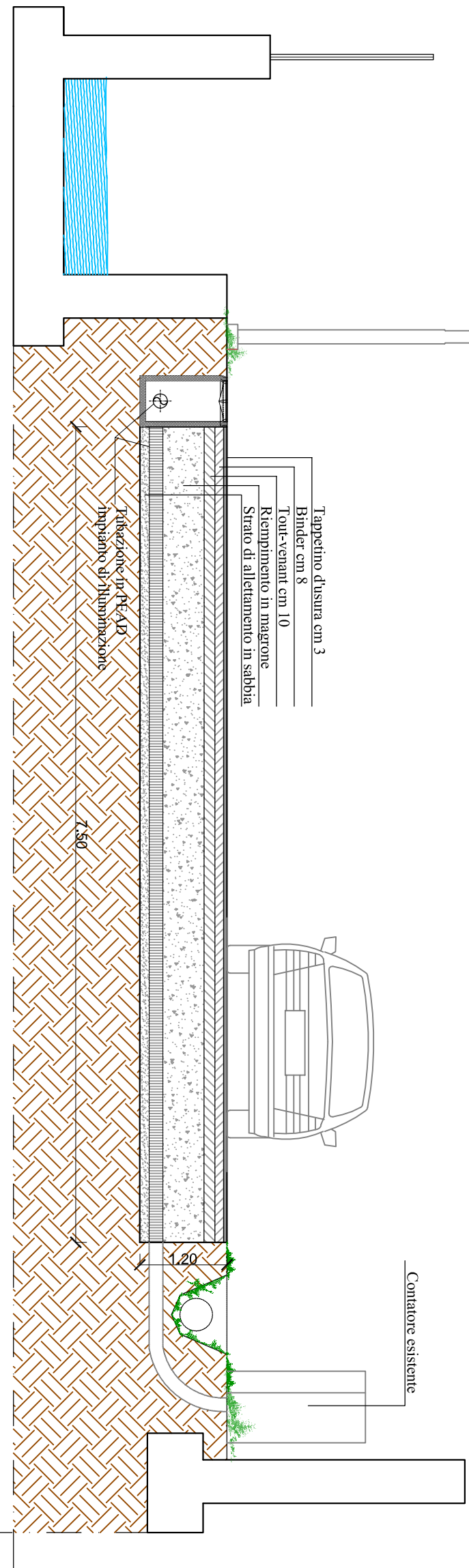
SCALA 1:20



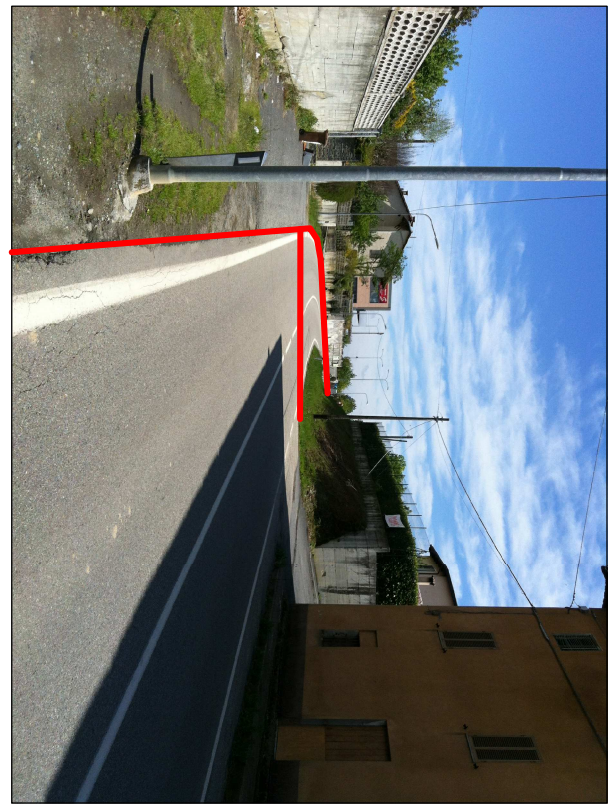
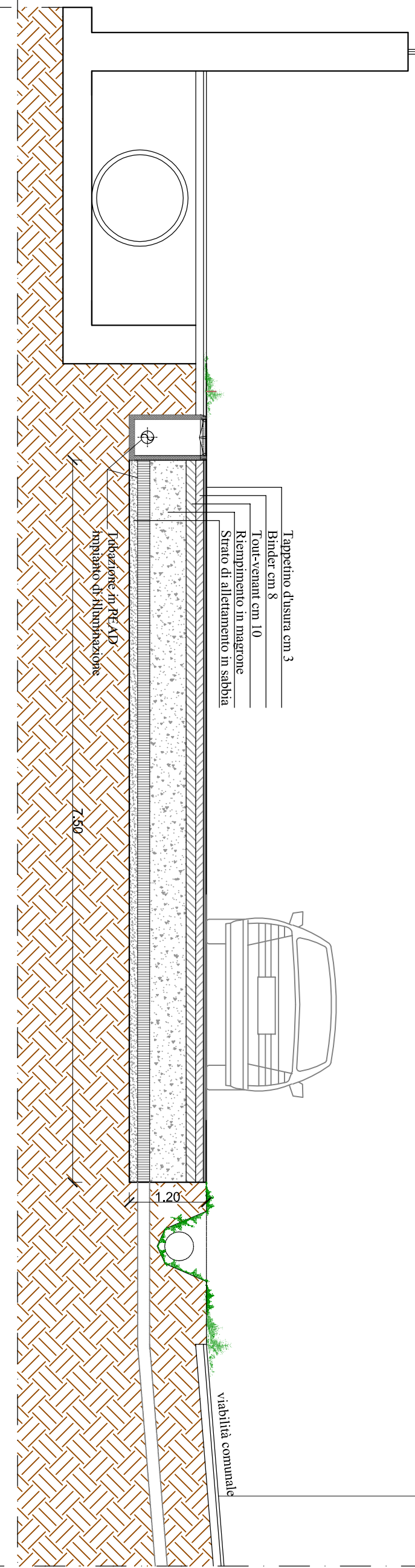
CODICE	DIMENSIONI ESTERNE (cm)					DIMENSIONI INTERNE (cm)					DIMENSIONI (cm)					RIS.
	A	B	C	D	E	F	G	H	I	J	K	L	M	N	O	P
PR 880	81	117	90	44	28	83	39	52	55	5	33	15	24	13	6	1750



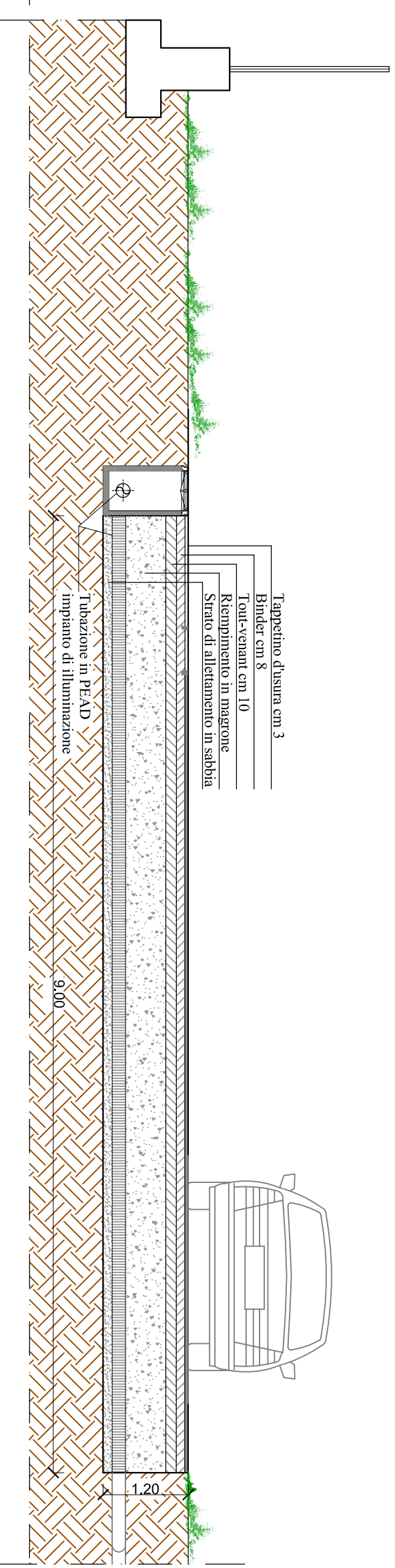
ATTRAVERSAMENTO 1  
Sezione trasversale - scala 1:50  
S.P. 217 km 1+320



ATTRAVERSAMENTO 2  
Sezione trasversale - scala 1:50  
S.P. 217 km 1+670



ATTRAVERSAMENTO 3  
Sezione trasversale - scala 1:50  
S.P. 217 km 0+400



PLANIMETRIA VIA GIOANNINI - SCALA 1:1.000

